



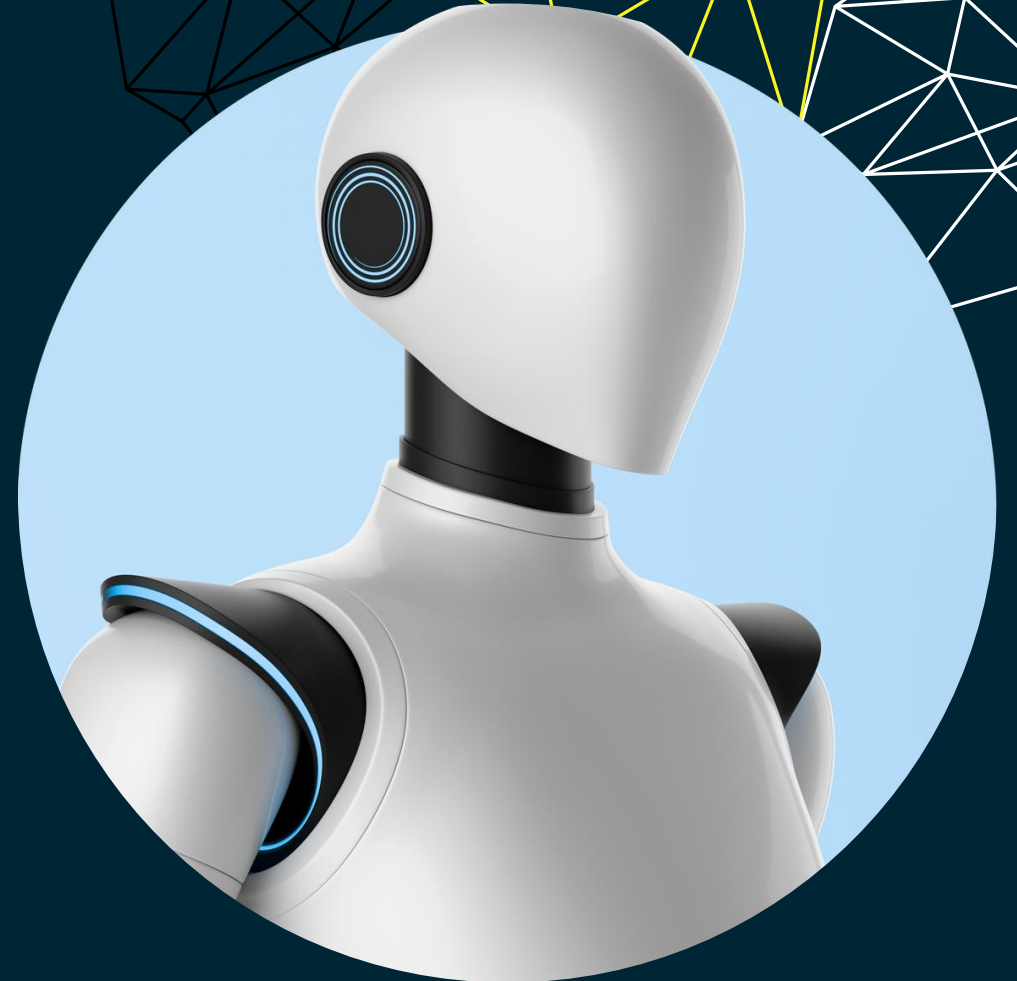
Synechron **AegisAgent**

An insurance-claim app fully developed by Kiro

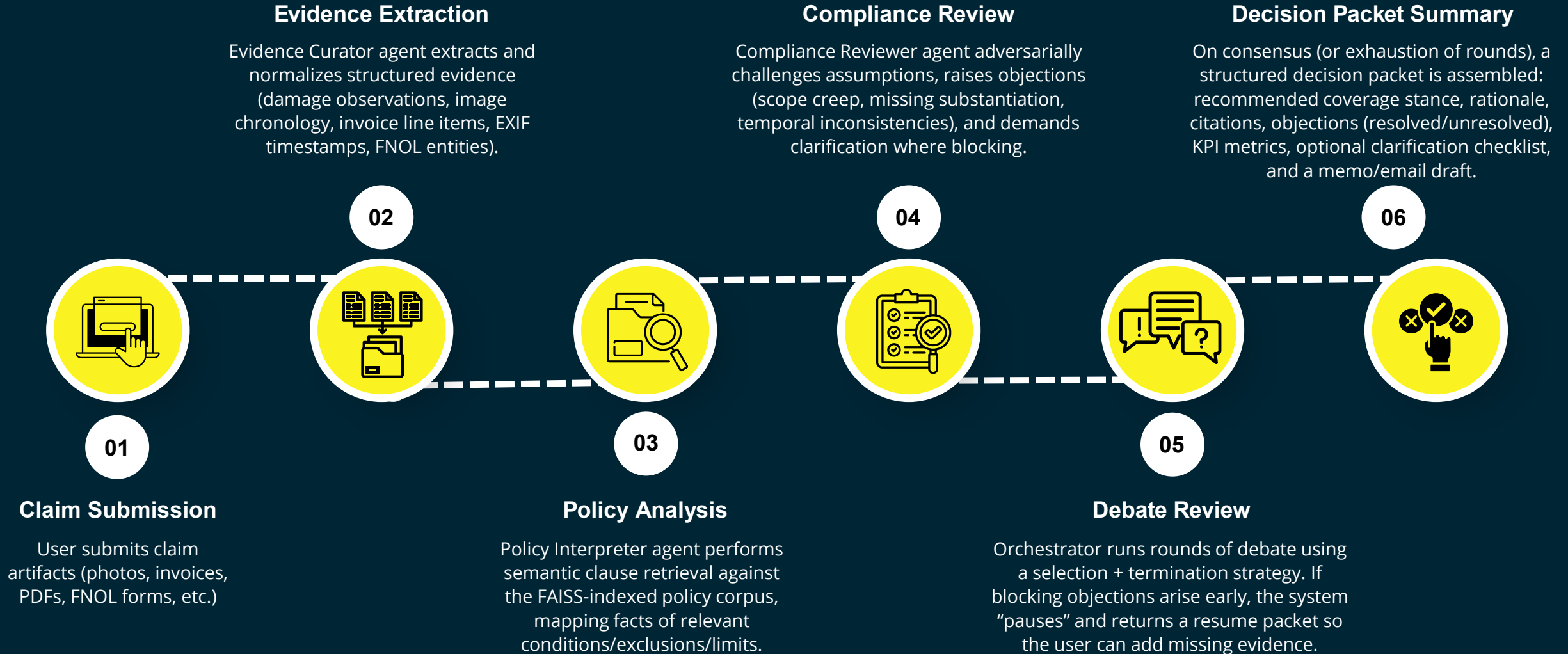
Synechron AegisAgent

Making insurance claim coverage decisions can be challenging. Evidence is often dispersed across photos, invoices, FNOL (First Notice of Loss) forms, and policy PDFs. Human reviewers must navigate through interpretive ambiguities such as determining whether damage was pre-existing, whether exclusions apply, or if documentation is complete—often under tight time constraints. This is where Synechron AegisAgent steps in to offer a smarter solution.

Synechron AegisAgent automates complex claim evaluations, uses multi-agent collaboration, semantic indexing, and advanced AI models to deliver transparent, traceable coverage decisions.

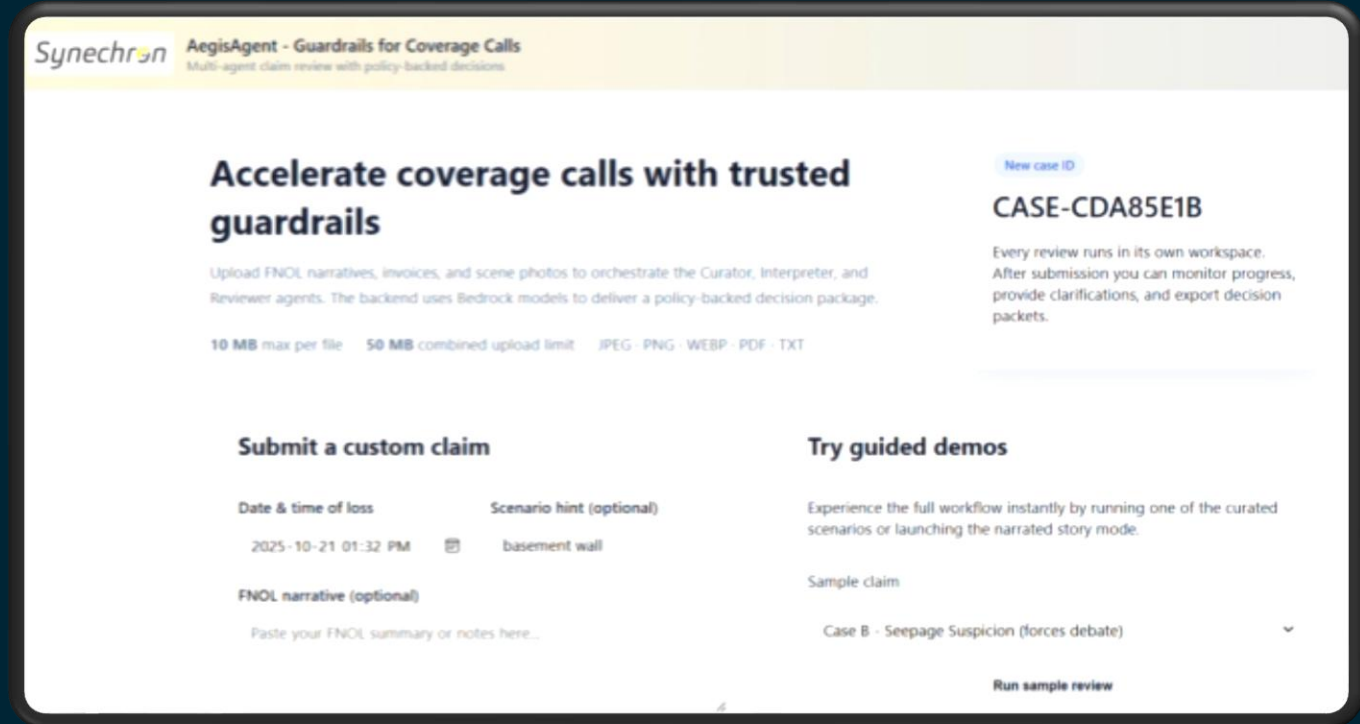


End-to-end Workflow Overview



Key Technologies and Frameworks

- **FAISS:** Store policy documents and vector representations in a semantic index (FAISS)
- **AWS Bedrock model:** Nova Pro for general reasoning and vision (reading images, forms)
- **AWS Kiro:** AI assistant tool for productivity and efficiency
- **AWS Agentcore:** Agent development framework and SDK
- **AI Specialized Agents:** Three AI agents – Evidence Curator collects and organize evidences, Policy Interpreter links facts to policy clauses, Compliance Reviewer reviews and pushes back for any missing piece.
- **Orchestration layer:** Organize agent speak turns, debate for a few rounds, and stop when either they agree or more evidence is needed.



High Impact Benefits

Transparent, traceable coverage reasoning workflow with explicit intermediate representations of evidence, interpretation, and compliance challenges.

Autonomous flow to flag and detect suspicious and anomaly fact in claim automation

Scaleable architecture design for more complex cases and scenario with integration of latest AWS technologies and cloud services.

Synechron

Thank you

For more information please contact:
partnerships@synechron.com